



# EMERALD - XTRA INSIGHTS - SURVEY 1: 2026



EMBARGOED UNTIL THURSDAY 18TH JUNE 2026 AT 11AM AEST

## Station Listened to Most (%), Monday to Sunday

	10+			10-17			18-39			25-39			40-54			55-64			65+*		
	This	Last	+/-	This	Last	+/-	This	Last	+/-	This	Last	+/-	This	Last	+/-	This	Last	+/-	This	Last	+/-
HIT94.7 EMERALD	34.9	42.8	-7.9	65.8	62.7	3.1	39.8	56.3	-16.5	35.9	55.0	-19.1	32.2	38.2	-6.0	17.5	16.8	0.7	5.0	8.8	-3.8
4HI	19.8	14.2	5.6	7.9	5.2	2.7	19.1	10.9	8.2	19.9	11.2	8.7	18.9	13.8	5.1	21.3	33.5	-12.2	38.3	14.2	24.1
ABC CAPRICORNIA	13.7	15.6	-1.9	14.5	4.2	10.3	8.3	5.6	2.7	8.8	5.9	2.9	15.4	12.8	2.6	17.5	33.0	-15.5	25.1	54.8	-29.7
ABC RADIO NATIONAL	2.5	2.5	0.0	0.0	4.1	-4.1	1.2	1.2	0.0	1.1	1.7	-0.6	3.5	4.9	-1.4	6.3	0.0	6.3	3.4	3.1	0.3
ABC NEWSRADIO	1.2	0.1	1.1	0.0	0.0	0.0	0.8	0.0	0.8	1.1	0.0	1.1	2.8	0.0	2.8	1.2	0.0	1.2	0.0	1.4	-1.4
ABC CLASSIC	0.5	0.6	-0.1	0.0	0.0	0.0	0.8	0.6	0.2	1.1	0.8	0.3	0.0	0.0	0.0	0.0	2.3	-2.3	1.7	0.0	1.7

\*Sample size is less than n=75 for marked demographic in at least one daypart - read with caution.

**Please note**, the percentage balance of Station Listened to Most not reported in this table is the total amount of all Other listening and represents multiple stations. This includes local narrowcasters, community, and out of market radio listening either via App, online streaming, DAB+ or AM/FM transmitter.

### Station Listened to Most (%)

The percentage of the total radio listening audience who say they listened most to one particular station during a given time period. It is based on a listener's recall of their previous week's listening. For example, 25.1% of the total radio audience said they listened most to Station A, Monday to Sunday.

Survey Period: 11th May 2026 - 7th June 2026

Copyright (c) Commercial Radio & Audio Ltd. All Rights. This data may not be used for, or in association with, any commercial purposes.

# EMERALD - XTRA INSIGHTS - SURVEY 1: 2026



EMBARGOED UNTIL THURSDAY 18TH JUNE 2026 AT 11AM AEST

## Session Listened to Most (%)

	Breakfast			Morning			Afternoon			Drive			Evening			Weekend		
	Mon-Fri 5.30am-9.00am			Mon-Fri 9.00am-12.00pm			Mon-Fri 12.00pm-4.00pm			Mon-Fri 4.00pm-7.00pm			Mon-Fri 7.00pm-12.00mn			Sat-Sun 5.30am-12.00mn		
	This	Last	+/-	This	Last	+/-	This	Last	+/-	This	Last	+/-	This	Last	+/-	This	Last	+/-
HIT94.7 EMERALD	36.1	43.1	-7.0	29.1	38.7	-9.6	34.2	42.2	-8.0	35.7	42.9	-7.2	11.6	31.3	-19.7	31.2	37.5	-6.3
4HI	19.2	12.7	6.5	24.7	16.2	8.5	20.0	14.1	5.9	17.9	12.6	5.3	20.3	9.0	11.3	19.4	10.1	9.3
ABC CAPRICORNIA	13.7	15.8	-2.1	13.0	15.6	-2.6	13.1	15.3	-2.2	11.0	13.8	-2.8	17.4	19.3	-1.9	13.1	18.2	-5.1
ABC RADIO NATIONAL	3.7	3.2	0.5	2.9	1.0	1.9	2.3	1.3	1.0	3.0	3.9	-0.9	4.3	4.3	0.0	3.2	2.6	0.6
ABC NEWSRADIO	1.2	0.3	0.9	1.3	0.2	1.1	1.1	0.2	0.9	1.4	0.2	1.2	2.9	0.0	2.9	1.2	0.2	1.0
ABC CLASSIC	0.4	0.9	-0.5	0.5	0.5	0.0	0.4	0.2	0.2	0.5	0.4	0.1	1.4	0.0	1.4	0.5	0.8	-0.3

### Session Listened to Most (%)

The percentage of the total radio listening audience who say they listened most to one particular station during a given time period. It is based on a listener's recall of their previous week's listening. For example, 25.1% of the total radio audience said they listened most to Station A, 5.30am-9.00am Monday to Friday.

Survey Period: 11th May 2026 - 7th June 2026

Copyright (c) Commercial Radio & Audio Ltd. All Rights. This data may not be used for, or in association with, any commercial purposes.

# EMERALD - XTRA INSIGHTS - SURVEY 1: 2026



EMBARGOED UNTIL THURSDAY 18TH JUNE 2026 AT 11AM AEST

Cumulative Audience (00's) by Demographic, Mon-Sun 5.30am-12midnight , P10+ [Potential: 458]

	10+			10-17			18-39			25-39			40-54			55-64			65+*		
	This	Last	+/-	This	Last	+/-	This	Last	+/-	This	Last	+/-	This	Last	+/-	This	Last	+/-	This	Last	+/-
HIT94.7 EMERALD	191	237	-46	39	37	2	81	123	-42	55	92	-37	47	57	-10	20	16	4	5	4	1
4HI	127	105	22	6	8	-2	53	29	24	42	24	18	29	26	3	16	30	-14	24	12	12
ABC CAPRICORNIA	105	116	-11	15	8	7	24	27	-3	17	23	-6	35	24	11	15	27	-12	16	29	-13
ABC RADIO NATIONAL	27	21	6	1	3	-2	4	5	-1	3	5	-2	7	8	-1	8	2	6	8	2	6
ABC NEWSRADIO	11	4	7	0	1	-1	3	0	3	3	0	3	5	2	3	2	0	2	2	1	1
ABC CLASSIC	5	5	0	0	0	0	2	2	0	2	1	1	1	1	0	2	1	1	1	1	0

\*Sample size is less than n=75 for marked demographic in at least one daypart - read with caution.

## Cumulative Audience (00's)

The total number of different people who listen to a station for at least 8 minutes during any time period, based on a listener's recall of their previous week's listening. For example, Station A has 25,000 unique listeners between 5.30am-12.00mn Monday to Sunday.

Survey Period: 11th May 2026 - 7th June 2026

Copyright (c) Commercial Radio & Audio Ltd. All Rights. This data may not be used for, or in association with, any commercial purposes.

# EMERALD - XTRA INSIGHTS - SURVEY 1: 2026



EMBARGOED UNTIL THURSDAY 18TH JUNE 2026 AT 11AM AEST

## Cumulative Audience (00's) by Session

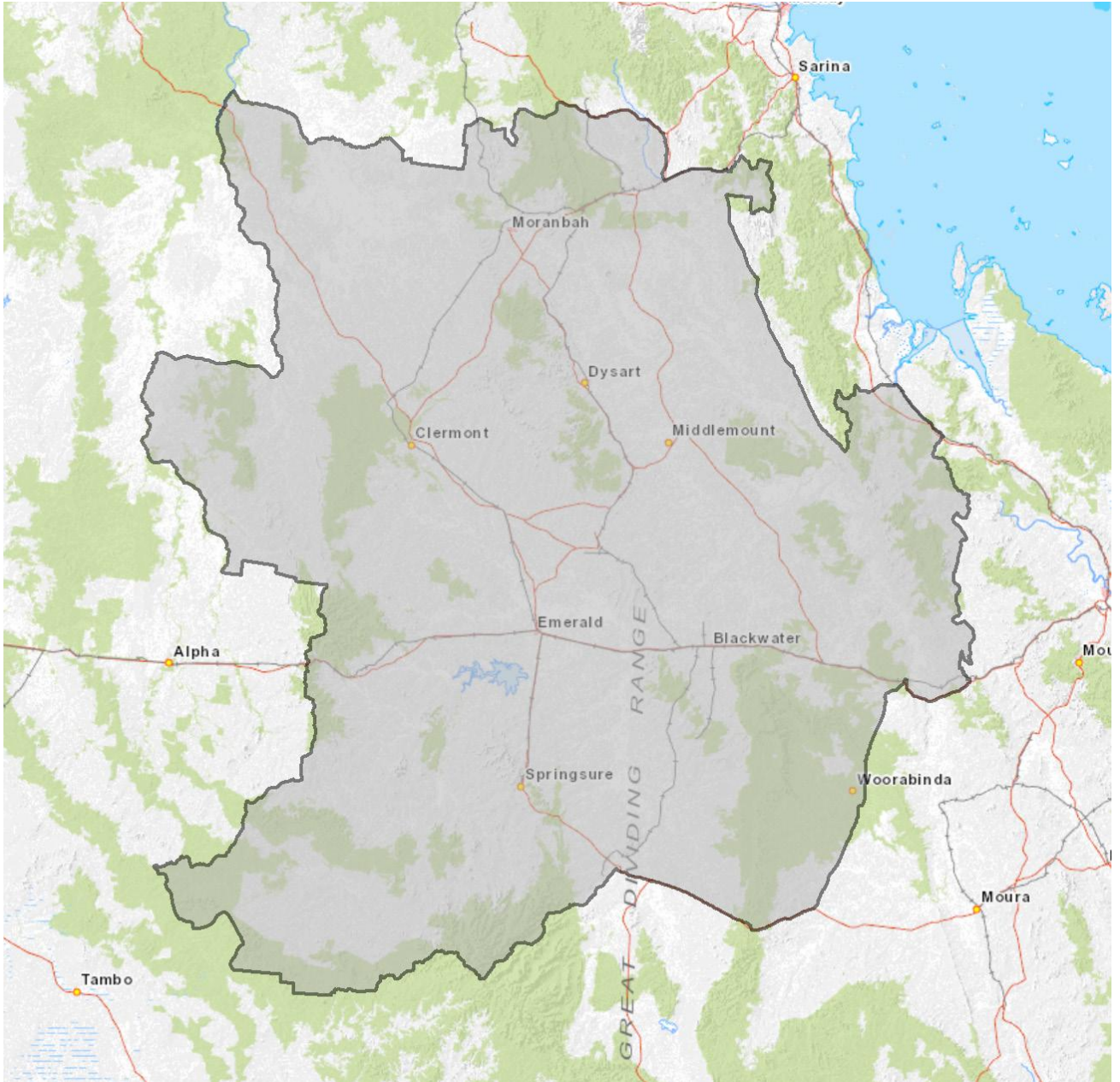
	Breakfast			Morning			Afternoon			Drive			Evening			Weekend		
	Mon-Fri 5.30am-9.00am			Mon-Fri 9.00am-12.00pm			Mon-Fri 12.00pm-4.00pm			Mon-Fri 4.00pm-7.00pm			Mon-Fri 7.00pm-12.00mn			Sat-Sun 5.30am-12.00mn		
	This	Last	+/-	This	Last	+/-	This	Last	+/-	This	Last	+/-	This	Last	+/-	This	Last	+/-
HIT94.7 EMERALD	157	177	-20	101	126	-25	134	145	-11	122	138	-16	15	38	-23	122	123	-1
4HI	97	62	35	88	68	20	81	65	16	71	50	21	12	15	-3	80	45	35
ABC CAPRICORNIA	88	73	15	61	57	4	65	57	8	53	50	3	15	24	-9	73	73	0
ABC RADIO NATIONAL	24	13	11	17	5	12	18	7	11	18	13	5	5	5	0	21	8	13
ABC NEWSRADIO	8	3	5	8	1	7	8	1	7	8	2	6	2	0	2	8	1	7
ABC CLASSIC	4	3	1	4	2	2	5	1	4	5	1	4	4	1	3	5	4	1

### Cumulative Audience (00's)

The total number of different people who listen to a station for at least 8 minutes during any time period, based on a listener's recall of their previous week's listening. For example, Station A has 25,000 unique listeners between 5.30am-12.00mn Monday to Sunday.

Survey Period: 11th May 2026 - 7th June 2026

Copyright (c) Commercial Radio & Audio Ltd. All Rights. This data may not be used for, or in association with, any commercial purposes.



Emerald Survey Coverage Area based on Commercial Radio & Audio's Licence Area Profile.